

BIBLIOGRAPHY

ALT NO.	SERIAL NO.	ALT. MARK	REQUIRED BY	DESCRIPTION	DATE	DESIGNED BY	CHECKED BY	APPROVED BY
------------	---------------	--------------	-------------	-------------	------	-------------	------------	-------------

FINISHED PLAN

HG-02



SALVICEROY

This drawing or document is the property of Universal Shipbuilding Corporation and must in no case wholly or partially be copied, shown or given to a third party without the expressed consent of Universal Shipbuilding Corporation.

S NO. 0025/0026/0032

150T BP OCEAN TOWING and SALVAGE TUG

APPROVED BY	<i>T. Okumura</i>
CHECKED BY	<i>T. Okumura</i>
CHECKED BY	<i>T. Murata</i>
DESIGNED BY	<i>S. Ishida</i>
DRAWN BY	<i>A. Gao</i>
DATE OF DWG	28, March, 2007

GENERAL ARRANGEMENT
(AS BUILT)

一般配置図
(完成図)

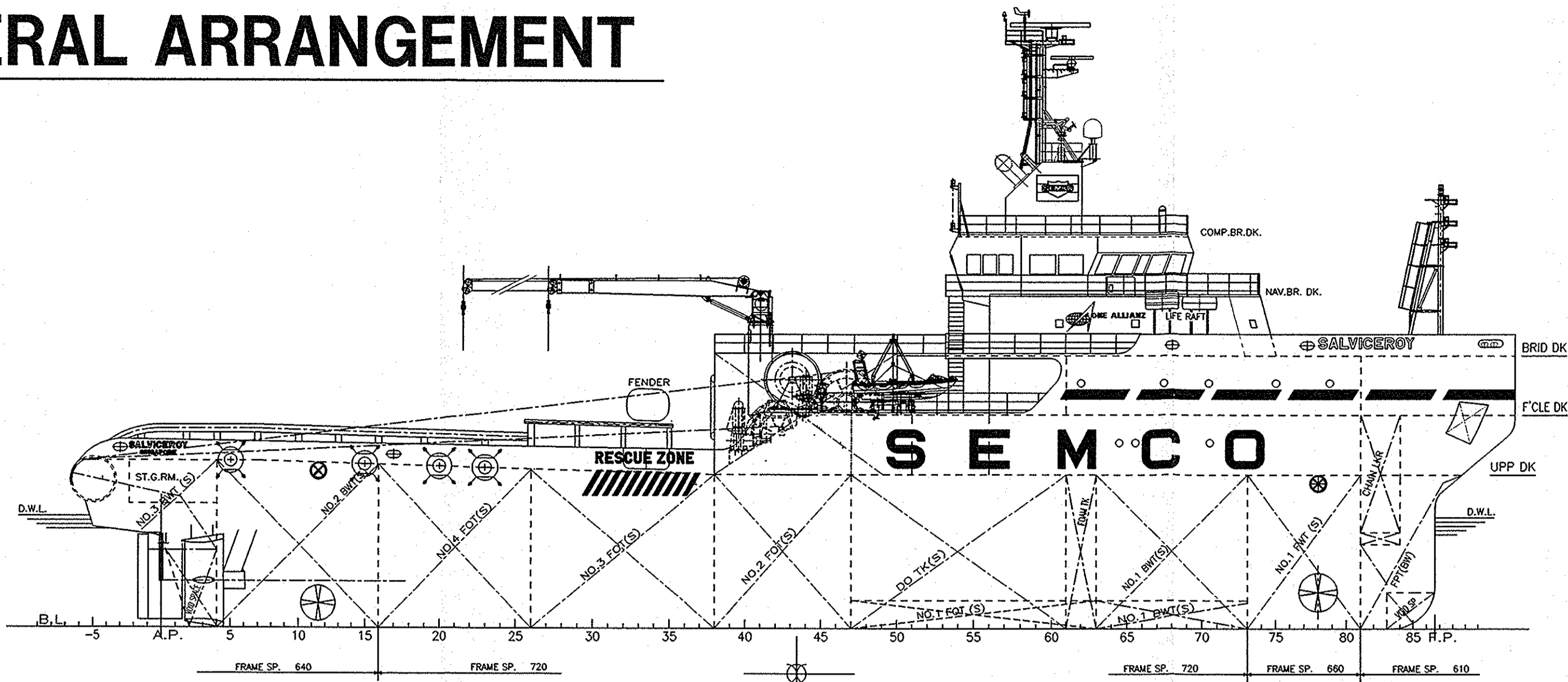
Universal Shipbuilding Corporation

Keihin Shipyard
Ship Design Department Hull Outfitting Design Section
- Yokohama Japan -

DWG. NO.	4011100
SHEET NO.	HG-02
SCALE:	-

DATE OF ISSUE

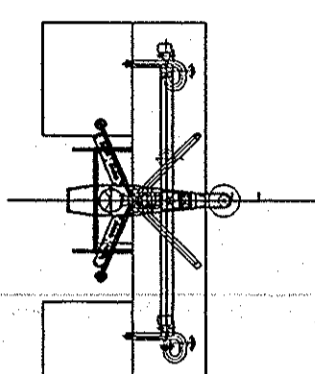
GENERAL ARRANGEMENT



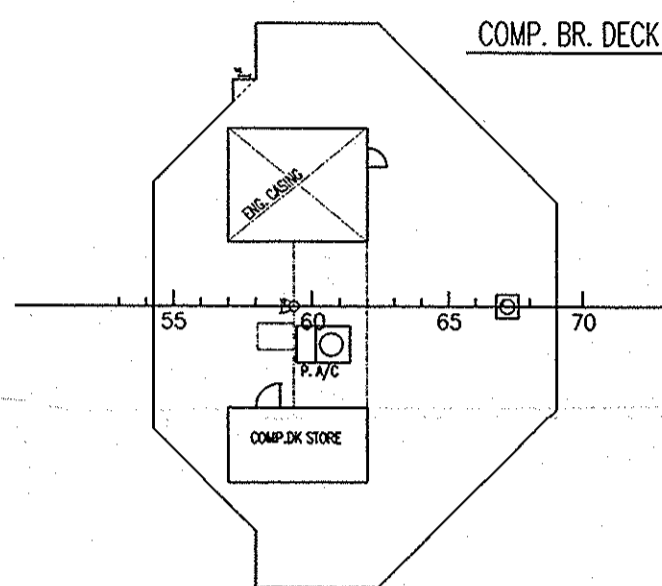
PRINCIPAL PARTICULARS

LENGTH(O.A)	APPROX. 68.0m
LENGTH(B.P)	60.00m
BREADTH(MLD)	16.40m
DEPTH(MLD)	7.20m
DRAFT (DESIGN) (MLD)	5.20m
DRAFT (SCANT.) (MLD)	6.00m
CLASS	ABS TOWING VESSEL

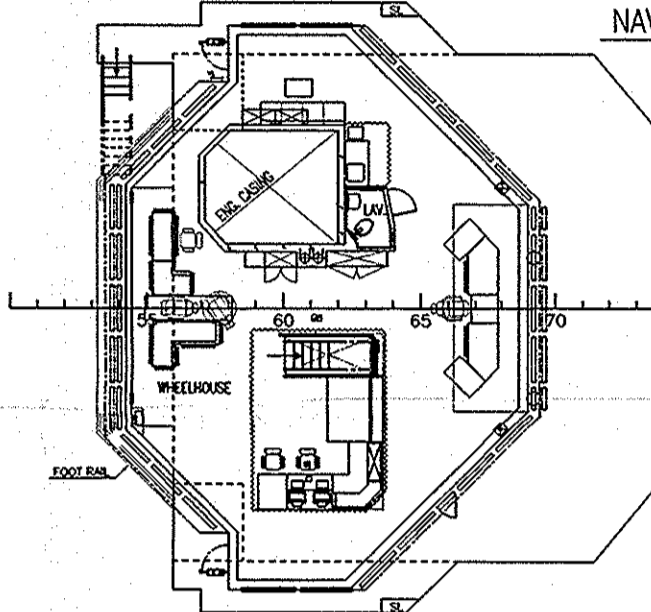
FIRE MONITOR STAGE



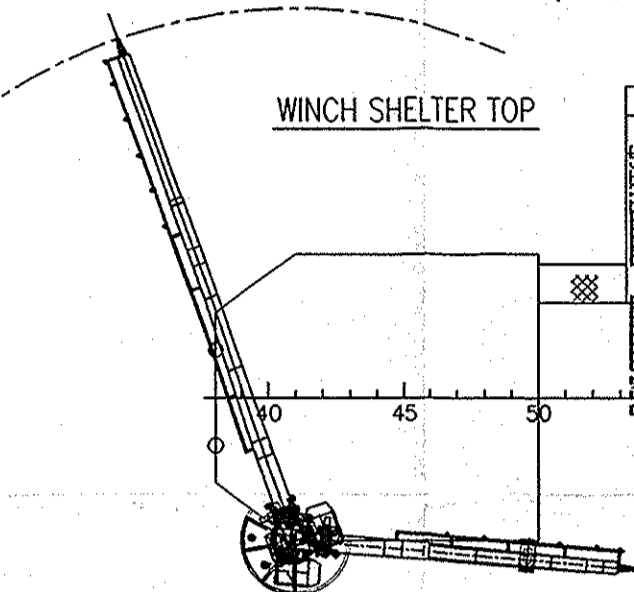
COMP. BR. DECK



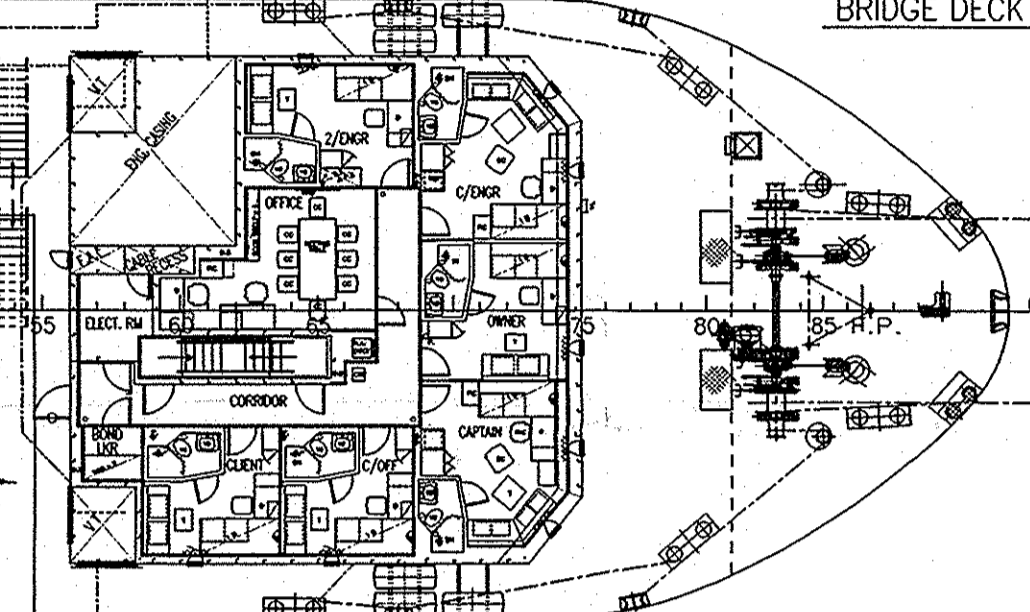
NAV. BR. DECK



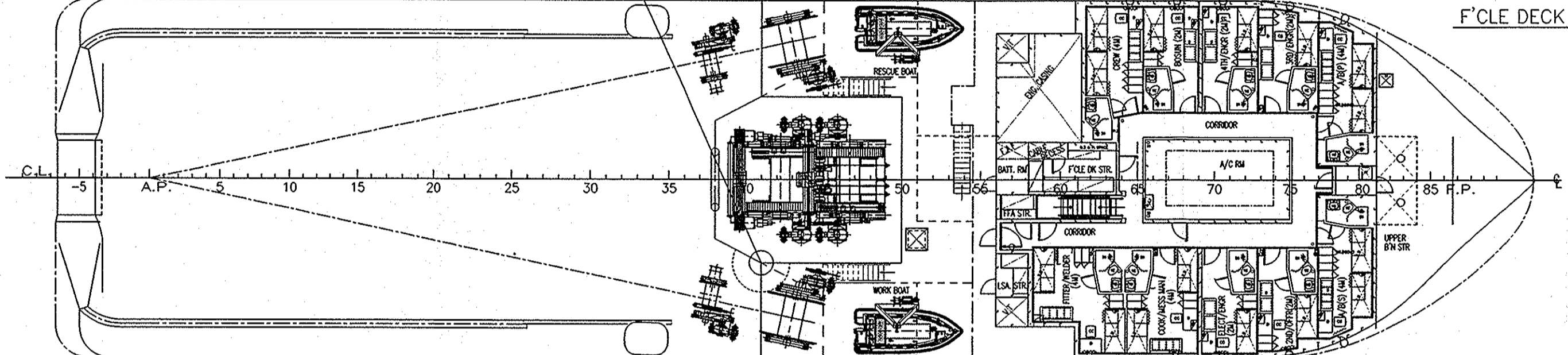
WINCH SHELTER TOP



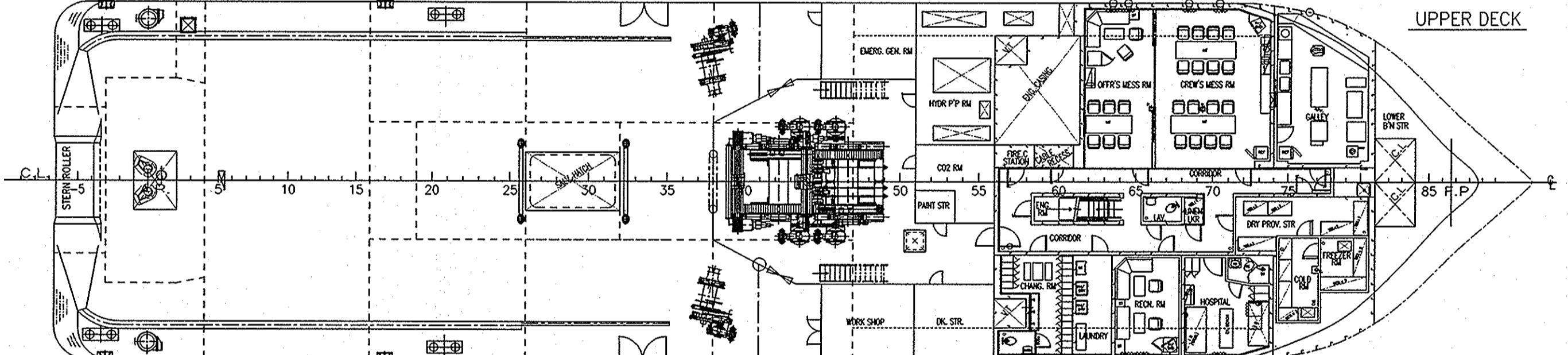
BRIDGE DECK



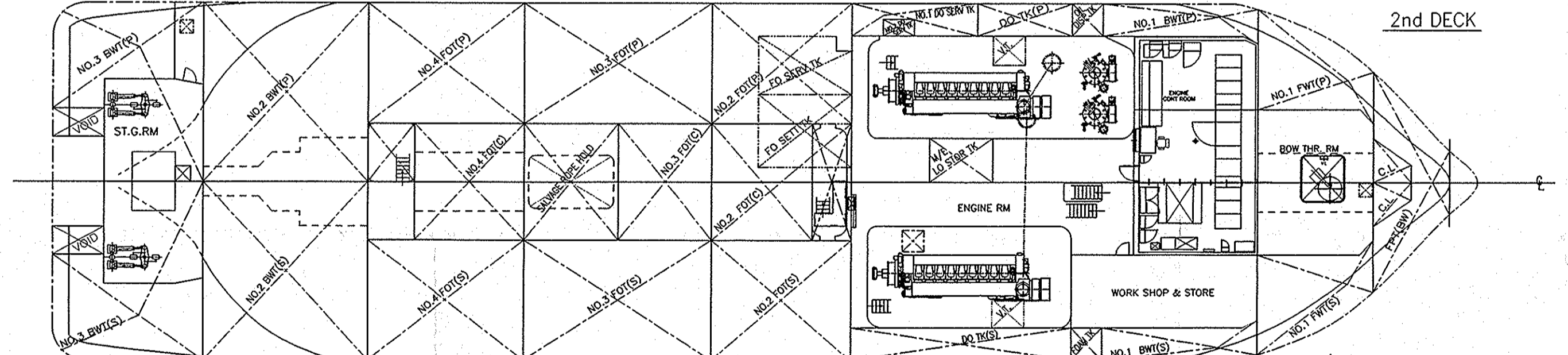
F'CLE DECK



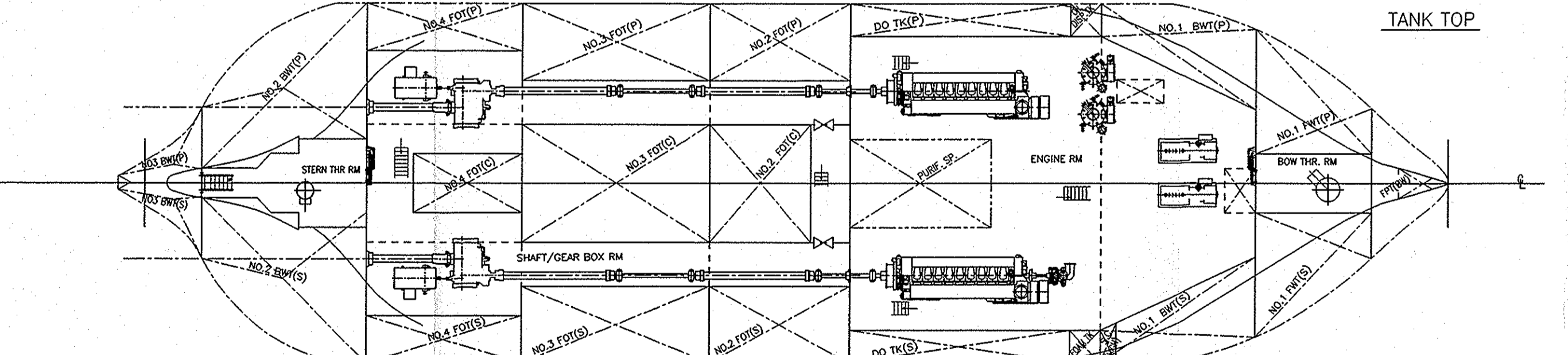
UPPER DECK



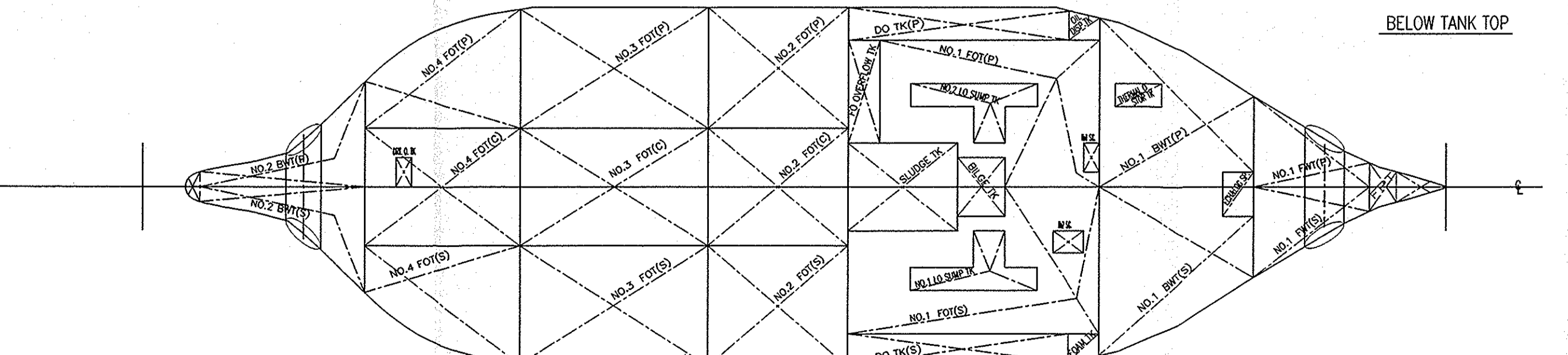
2nd DECK



TANK TOP



BELOW TANK TOP



DESIGN DEPARTMENT	SALVICEROY	150T BP OCEAN TOWING and SALVAGE TUG
APPROVED BY	<i>[Signature]</i>	GENERAL ARRANGEMENT
CHECKED BY	<i>T. Okumura</i>	
CHECKED BY	<i>T. Muto</i>	
DESIGNED BY	<i>S. Ishida</i>	
DRAWN BY		
DATE OF DRAWING	28 Mar. 2007	DWG. NO. 4011100 REV. DATE OF ISSUE
SCALE	1/200	
Universal Shipbuilding Corporation		